

C.W

Counting 1001 - 1050

Th	H	T	O	Th	H	T	O	Th	H	T	O
1	0	0	1	1	0	1	1	1	0	2	1
1	0	0	2	1	0	1	2	1	0	2	2
1	0	0	3	1	0	1	3	1	0	2	3
1	0	0	4	1	0	1	4	1	0	2	4
1	0	0	5	1	0	1	5	1	0	2	5
1	0	0	6	1	0	1	6	1	0	2	6
1	0	0	7	1	0	1	7	1	0	2	7
1	0	0	8	1	0	1	8	1	0	2	8
1	0	0	9	1	0	1	9	1	0	2	9
1	0	1	0	1	0	2	0	1	0	3	0

Th	H	T	O	Th	H	T	O
1	0	3	0	1	0	4	1
1	0	3	1	1	0	4	2
1	0	3	2	1	0	4	3
1	0	3	3	1	0	4	4
1	0	3	4	1	0	4	5
1	0	3	5	1	0	4	6
1	0	3	6	1	0	4	7
1	0	3	7	1	0	4	8
1	0	3	8	1	0	4	9
1	0	3	9	1	0	5	0
1	0	4	0				

Counting 1051 - 1100

Th	H	T	O	Th	H	T	O	Th	H	T	O
1	0	5	1	1	0	6	1	1	0	7	1
1	0	5	2	1	0	6	2	1	0	7	2
1	0	5	3	1	0	6	3	1	0	7	3
1	0	5	4	1	0	6	4	1	0	7	4
1	0	5	5	1	0	6	5	1	0	7	5
1	0	5	6	1	0	6	6	1	0	7	6
1	0	5	7	1	0	6	7	1	0	7	7
1	0	5	8	1	0	6	8	1	0	7	8
1	0	5	9	1	0	6	9	1	0	7	9
1	0	6	0	1	0	7	0	1	0	8	0

Th	H	T	O		Th	H	T	O
1	0	8	1		1	0	9	1
1	0	8	2		1	0	9	2
1	0	8	3		1	0	9	3
1	0	8	4		1	0	9	4
1	0	8	5		1	0	9	5
1	0	8	6		1	0	9	6
1	0	8	7		1	0	9	7
1	0	8	8		1	0	9	8
1	0	8	9		1	0	9	9
1	0	9	0		1	1	0	0

Write in words

112 - One hundred and twelve

120 - One hundred and twenty

139 - One hundred and thirty
nine

193 - One hundred and ninety
three

200 - Two hundred

215 - Two hundred and fifteen

Write in figures
Words

Number

One hundred and one = 101

One hundred and seventy = 170

six

Three hundred and eleven = 311

One hundred and eighty four = 184

Six hundred and ten = 610

Four hundred and eight = 408

Shapes

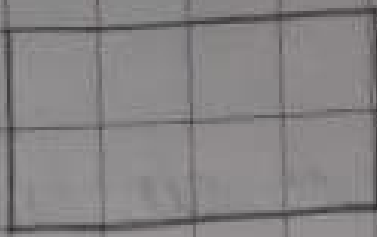
182

101

Rectangle → A rectangle has 4 sides and 4 corners.

176

Two opposite sides are equal.



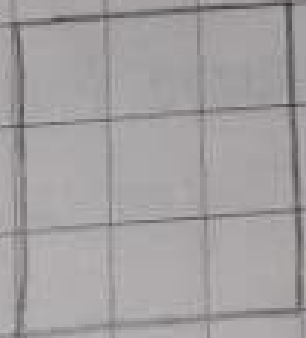
311

184

Square → A square has 4 sides and 4 corners.

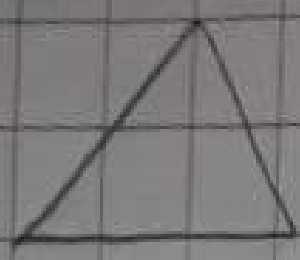
510

All sides are equal.



108

Triangle → A triangle has 3 sides and 3 corners.



Circle → A circle has no sides and no corners.

Oval → An oval has no sides and no corners.



'8' Table of '9'

$$8 \times 1 = 8$$

$$9 \times 1 = 9$$

$$8 \times 2 = 16$$

$$9 \times 2 = 18$$

$$8 \times 3 = 24$$

$$9 \times 3 = 27$$

$$8 \times 4 = 32$$

$$9 \times 4 = 36$$

$$8 \times 5 = 40$$

$$9 \times 5 = 45$$

$$8 \times 6 = 48$$

$$9 \times 6 = 54$$

$$8 \times 7 = 56$$

$$9 \times 7 = 63$$

$$8 \times 8 = 64$$

$$9 \times 8 = 72$$

$$8 \times 9 = 72$$

$$9 \times 9 = 81$$

$$8 \times 10 = 80$$

$$9 \times 10 = 90$$